

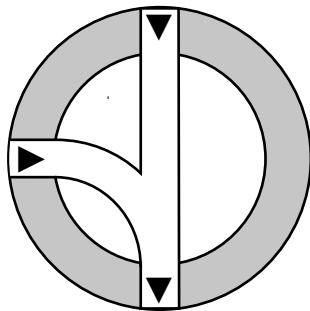
RIKI-Lagerschächte DN 1000

nach DIN EN 1917 und DIN V 4034-1

Typ 1 - 9 • Gerinne aus Beton

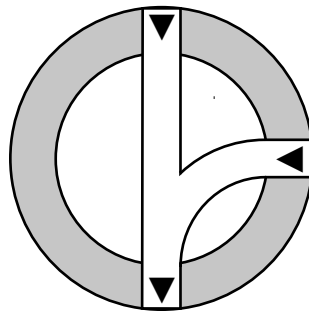
Typ 1

0/100/200 gon KG 150



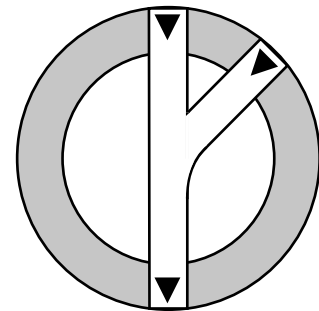
Typ 2

0/200/300 gon KG 150



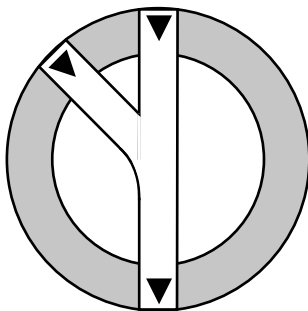
Typ 3

0/200/250 gon KG 150



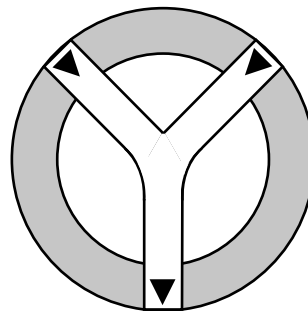
Typ 4

0/150/200 gon KG 150



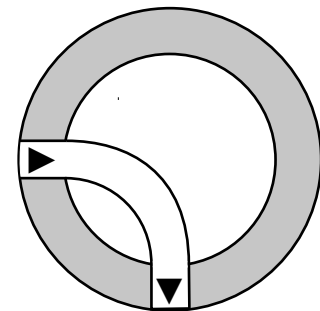
Typ 5

0/150/250 gon KG 150



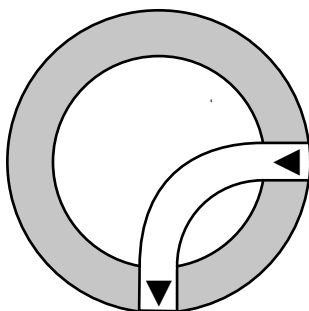
Typ 6

0/100 gon KG 150



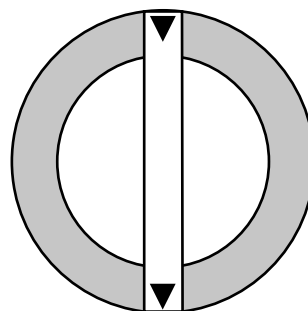
Typ 7

0/300 gon KG 150



Typ 8

KG DN 200



Typ 9

100/200/300 gon KG 150
 0 gon KG 200

